



# TSU LT

## Product Features

- Single V.35 DTE interface
- Nx56 or Nx64 operation for data rates to 1.536 Mbps
- Auto and Manual D4(SF) or ESF framing support
- B8ZS or AMI line coding
- Easy to use front panel keypad or EIA-232 control port for unit configuration and monitoring
- Remote TSU LT configuration via FDL or 8k in-band
- Local and remote loop-back capability
- Extensive built in test capabilities
- Network T1 Test Access jacks
- Support for T-Watch PRO™ software for optional PC based configuration
- IEC standard power connection
- Industry-leading five-year North American warranty

## Full Featured T1/FT1 DSU/CSU

The ADTRAN™ TSU LT™ is a low cost, full-featured T1/FT1 Data Service/ Channel Service Unit (DSU/CSU). The TSU LT provides an interface between T1 or Fractional T1 service and the end user's Data Terminal Equipment (DTE) for applications such as LAN to LAN bridging, Frame Relay circuit termination and videoconferencing. The TSU LT provides access to traditional dedicated point-to-point T1 services as well as network termination for Frame Relay.

Housed in a compact, durable plastic housing the TSU LT supports synchronous data rates from 56 Kbps to 1.536 Mbps at Nx56 or Nx64 Kbps. A single V.35 physical interface provides a connection to the end user's DTE equipment.

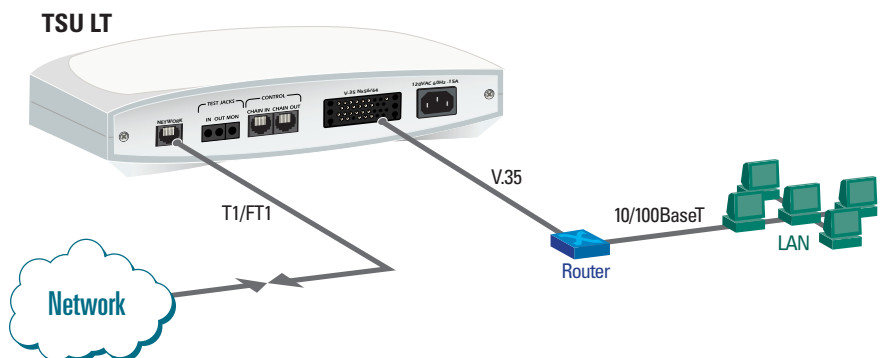
For configuration and testing, the TSU LT provides the capability to control a remote TSU LT through the T1 FDL channel. If the FDL channel is unavailable, the TSU LT can use 8 kbps of the data traffic to provide configuration and control of the remote unit. The in-band control channel is used on an as-needed basis and is automatically controlled by the TSU LT.

The TSU LT responds to standard local and remote loopback commands from the telephone company central office. In addition,

the user has several built-in test capabilities including V.54 remote loopback and 511 BERT test patterns. Complete configuration and performance data is available from the front panel keypad and two-line by 16 character LCD display. For additional configuration and monitoring options, the TSU LT supports a VT100 terminal configuration and control mode which is available through the control port. For direct serial connections or for remote devices, optional Windows® based PC Management is available through the comprehensive, easy to use T-Watch PRO™ software package.

The ADTRAN TSU LT desktop unit also provides integrated keyholes in the bottom housing for wall mount applications or can be rackmounted using ADTRAN's custom designed 19" shelves.

ADTRAN provides several T1 DSU/CSUs for a variety of customer applications. Additional products in the TSU family include the TSU™, TSU ESP™, TSU100™, TSU120™, TDU120™, and the TSU600™. These T1/FT1 DSU/CSUs offer flexibility, modularity and end user configuration. The modular approach allows the ADTRAN TSU family to serve in point to point T1 applications with a mixture of voice, data and video.





### ADTRAN, Inc.

Attn: Enterprise Networks  
901 Explorer Boulevard  
Huntsville, AL 35806

P.O. Box 140000  
Huntsville, AL 35814-4000

256 963-8000 voice  
256 963-8699 fax  
256 963-8200 fax back

**General Information**  
800 9ADTRAN  
info@adtran.com  
www.adtran.com

**Pre-Sales  
Technical Support**  
800 615-1176 toll-free  
application.engineer@adtran.com  
www.adtran.com/support

**Where to Buy**  
877 280-8416 toll-free  
channel.sales@adtran.com  
www.adtran.com/where2buy

**Post-Sales  
Technical Support**  
888 423-8726  
support@adtran.com  
www.adtran.com/support

**ACES Installation &  
Maintenance Service**  
888 874-ACES  
aces@adtran.com  
www.adtran.com/support

**International Inquiries**  
256 963 8000 voice  
256 963-6300 fax  
international@adtran.com  
www.adtran.com/international

**For the regional office  
nearest you, visit:**  
www.adtran.com/where2buy



ADTRAN is a  
ISO 9001 registered company.



ADTRAN is a  
TL 9000 registered company.

61203060L1-8A March 2003  
Copyright © 2003 ADTRAN, Inc.  
All rights reserved.

# TSU LT

## Full Featured T1/FT1 DSU/CSU

## Product Specifications

### Network Interface

- **Line Rate:** T1/FT1 (1.544 Mbps)

### Physical Interface

- **RJ48C:** 8-Pin Modular

### Framing

- SF/ESF
- Auto Detection

### ESF Format

- AT&T 54016
- ANSI T1.403

### Line Code

- AMI/B8ZS

### Input Signal

- 0 to -36dB

### DSO Assignment

- Contiguous
- Alternating

### T1 Transmit Timing

- Network Loop Timed
- Internal
- DTE

### DTE Interface

- **Bit Rate:** 56 Kbps to 1.536 Mbps,  
Nx56 or Nx64 Kbps (N=1 to 24)

### Electrical

- CCITT V.35

### Mechanical

- V.35 (Winchester Type 34 pin)

### DTE Transmit Clock

- Automatic

### Control Port

- EIA-232
- RJ 48C

### Performance Monitor Performance Data

- BPVs/CRCs, ES, SES, UAS, % AS, % EFSEC,  
Alarms, Errors

### Reports

- NI information stored for last 24 hours in  
15 minute increments

### PRMS

- ANSI Performance Report Messages  
(User selectable)

### Tests

- **Local:** Payload/Line Loopback, DTE Loopback
- **Remote:** Payload/Line Loopback, V.54 (DTE) Loopback
- **Network:** CSU and DSU loopbacks
- Test Access jacks for Network T1

### Built-In Test Patterns

- 511 (active DS0s) with error insert available
- 1:8 (all DS0s)
- All 1's (all DS0s)
- All 0's (all DS0s)

### Agency Approvals

- FCC part 15, Class A, FCC Part 68, Industry Canada  
CS03, UL, CUL

### Environment

- **Operating:** 0 to 50 °C (32 to 122 °F)
- **Storage:** -20 to 70 °C (-4 to 158 °F)
- **Relative Humidity:** Up to 95%, non-condensing

### Physical

- **Dimensions:** 1.5" H, 6.25" D, 9.0" W
- **Weight:** 2 lbs.
- **Power:** 115 VAC, 60Hz, 5W

## Ordering Information

Equipment	Part #
TSU LT	1203060L1
19" Rackmount Shelves	Part #
HRM-1MA Shelf - single unit	1200411L1
VRM-7MA Shelf - up to 7 units	1200417L1



Specifications subject to change without notice. ADTRAN, TSU, TSU ESP, TSU 100, TSU 120, TDU 120, TSU 600 and T-Watch PRO are trademarks of ADTRAN, Inc. All registered trademarks and trademarks mentioned in this publication are the property of their respective owners.