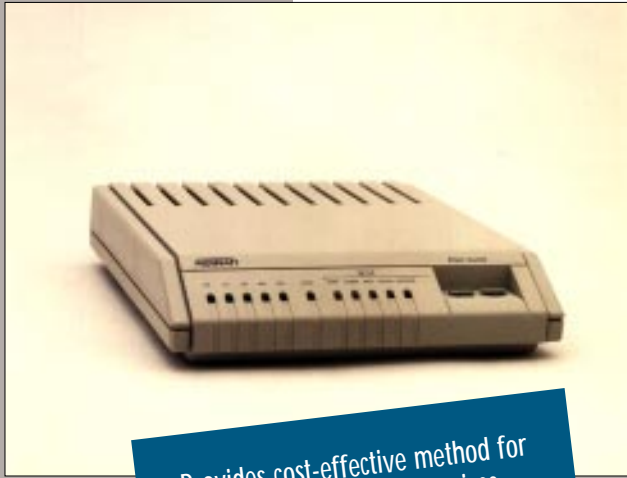


DSU 5600

DDS DSU/CSU



Provides cost-effective method for termination of DDS services

EIA-232 DTE interface

Synchronous 56K or 64K rates

Asynchronous rates from 1.2 to 57.6 kbps

Slim packaging can be installed on the desktop, mounted on wall, or housed in the ADTRAN RM10AC rackmount chassis

Internal power supply

Can be used for point-to-point or multi-point applications

Easy to configure; all options set by easily accessible DIP switches

Multiple test and diagnostic features

Standard 5 year warranty

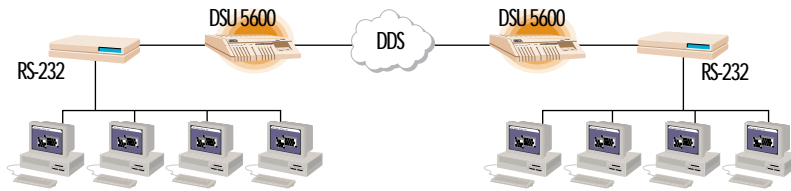
The ADTRAN DSU 5600 provides a cost-effective solution for termination of 56 or 64 kbps DDS services. The unit is a very economical solution for single port point-to-point or multi-point applications. Microprocessor and VLSI technology enhance the capabilities of the DSU 5600, which is housed in an attractive, slim line, stand-alone, wall-mount, or rackmount enclosure.

The DSU 5600 provides both a physical and electrical EIA-232 DTE interface, which is mounted on the rear panel. The DTE interface operates either at 56 or 64 kbps synchronous or 1.2 to 57.6 kbps asynchronous. Also located on the rear panel are option switches along with an RJ-48S network interface.

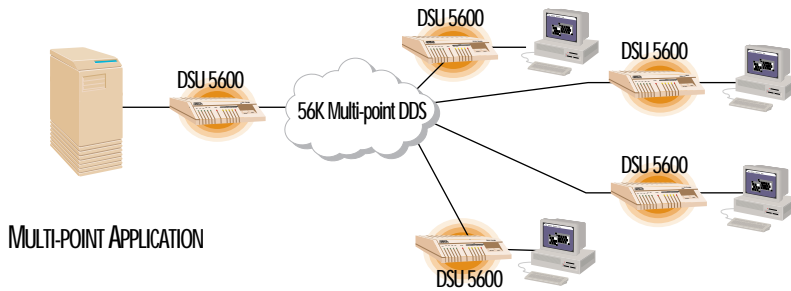
The option switches allow the user to select the rate of operation, point-to-point or multi-point, CD, CS, SR options, plus enable or disable Remote Digital Loop back.

The unit responds to standard loopback commands from the service provider. In addition, the unit has built-in test capabilities such as V.54 remote loopback, DTE, DTE and Loop, DTE with test pattern, and Loop only. Included with the remote loopback is the capability to select a 2047 BERT test pattern, with results displayed on the front panel.

The front panel of the DSU 5600 provides a set of eleven LED indicators. Five indicators show the status of the EIA-232 DTE interface while the remaining LEDs indicate the various test modes and loop status. Two front panel keys allow the user to select one of the several test modes supported by the unit.



POINT-TO-POINT APPLICATION



MULTI-POINT APPLICATION

SPECIFICATIONS

OPERATIONS

MODES

Dedicated DDS
Point-to-point
Multi-point

LINE INTERFACE

RS-232

SERVICE/DTE RATES

Synchronous: 56/64 kbps

Asynchronous: 1.2/57.6 kbps

APPROVALS

FCC Part 15 Class A
FCC Part 68
UL and CSA

INDICATORS

STATUS

RS, CS, TD, RD, CD, & ALM

TEST

DTE, LOOP, RDL, PTRN, & ERROR

TESTS

LOCAL

DTE, DTE/LOOP, DTE with
TEST PATTERN, LOOP ONLY, and
TEST PATTERN

REMOTE

V.54 with or without 2047 test pattern

OPTIONS

Set by dip switch

LOOP RATE

56 or 64 kbps

DTE RATE

1.2/57.6 Async
56/64 Sync

CS

On or follow RS

CD

On or Normal

SR

On or Normal

RDL

Enable or Disable

SCRAMBLER

Enable or disable

ENVIRONMENT

OPERATING

0°C to 50°C (32°F to 122°F)

STORAGE

-20°C to 70°C (4°F to 158°F)

HUMIDITY

Up to 95%, non-condensing

PHYSICAL

DIMENSIONS

1.625" H, 6.5" W, 8.25" D

WEIGHT

1.5 lbs

POWER

115 VAC, 60 Hz, 2 W

ADTRAN

CORPORATE OFFICE

901 Explorer Boulevard
Huntsville, Alabama 35806
(800) 827-0807
Local (205) 971-8000
Fax (205) 971-8699

SALES OFFICES

Pasadena, CA
(800) 788-5408
Local (818) 577-5400

Denver, CO
(303) 220-4777

Atlanta, GA
(800) 332-6945
Local (404) 806-9788

Chicago, IL
(708) 851-6699

Kansas City, MO
(913) 663-3939

St. Louis, MO
(314) 256-4433

New York, NY
(203) 261-3554

Philadelphia, PA
(610) 559-6000

Dallas, TX
(214) 869-7699

Washington D.C.
(703) 777-3037

Canada
(416) 805-9937

ORDERING INFORMATION

Equipment	Part Number
DSU 5600	1200078L1



ISO 9001/EN 29001

ADTRAN is an ISO 9001
registered company.

61200.078L1-8B
May 1995

Specs subject to change without notice
Printed in U.S.A.



Printed on recycled paper
©ADTRAN, Inc. 1995