

TRACER

Wireless E1

Product Features

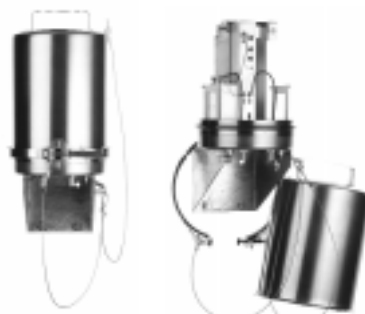
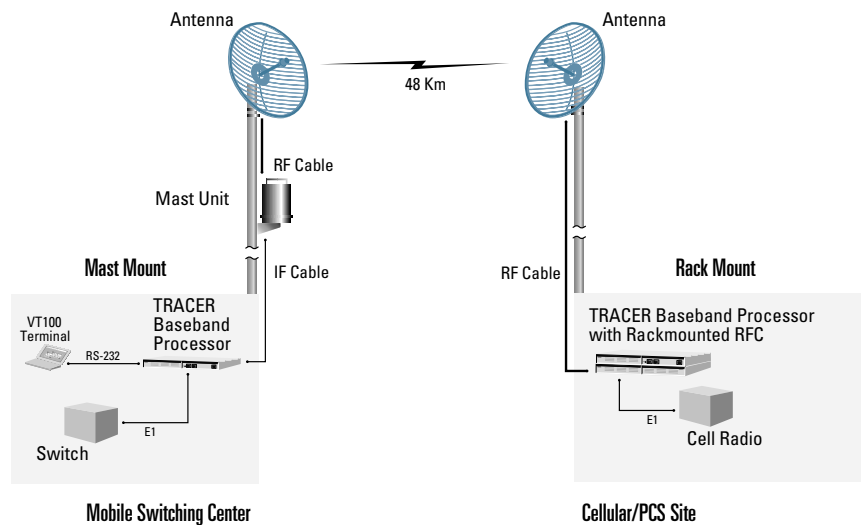
- Digital Microwave Radio
- E1 Interface
- Direct Sequence Spread Spectrum
- Frequency 2.4 to 2.4835 GHz
- No License Required in many Countries
- Frequency Agile
- Remote Loopback
- Remote Control of Far-End
- Rack or Mast-mounted RFC Option
- 1U (4.4 cm), 48.3 cm (19" EIA) Rack Space using Mast-mounted RFC
- Point-to-Point, Up to 48 km

The ADTRAN Tracer® is a digital microwave radio that uses spread spectrum technology to provide E1 communication links. Tracer operates in the 2.4 - 2.4835 GHz band and is unlicensed in many countries.

Tracer is composed of two primary components, a Baseband Processor and a radio-frequency converter (RFC). To minimize transmission line loss at 2.4 GHz, the RFC may be mast mounted up to 100 meters from the Baseband Processor, using a single RG-8 size coax. Additionally, the RFC may be rack mounted as an option for installations using low-loss coax connections to the antenna. All signaling and power functions between the Baseband Processor and RFC are provided over a single coax connection.

Tracer transports an E1 digital signal in either HDB3 or AMI coding formats and provides either 75Ω BNC or 120Ω DB-15/RJ-48 interfaces. A separate maintenance channel is embedded in the Tracer data stream, providing remote configuration and monitoring functions. The main-tenance channel is provided without impacting the E1 capacity.

By using the latest technology and incorporating ADTRAN's ISO 9001 manufacturing processes, ADTRAN has designed Tracer to provide the highest levels of reliability and durability.



Mast-mounted RFC



E1 Baseband Processor



Rack-mounted RFC



AC Adapter



ADTRAN, Inc.
Attention:
International Department
901 Explorer Boulevard
Huntsville, Alabama 35806
USA

www.adtran.com

Asia Pacific—Beijing, China
8610 8857-6415 voice
8610 8857-6417 fax
sales.china@adtran.com

Asia Pacific—Hong Kong
852 2824-8283 voice
852 2824-8928 fax
sales.asia@adtran.com

Asia Pacific—Melbourne,
Australia
61 3 9658-0500 voice
61 3 9658-0599 fax
sales.asia@adtran.com

Canada—Ontario
1 416 290-0585 voice
1 416 296-1259 fax
sales.ontario@adtran.com

Canada—Quebec
1 877 923-8726 toll free
1 514 940-2888 voice
1 514 940-2890 fax
sales.quebec@adtran.com

Canada—Other Provinces
1 877 923-8726 toll free
sales.canada@adtran.com

Germany
49 6007 930-203 voice
49 6007 930-204 fax
sales.germany@adtran.com

Latin America/Caribbean
1 954 474-4424 voice
1 954 474-1298 fax
sales.latin@adtran.com

Mexico
1 256 963-8240 voice
1 256 963-6300 fax
sales.mexico@adtran.com

Northern Europe/Russia—
London, United Kingdom
44 1252 626-730 voice
44 1252 617-850 fax
sales.northeurope@adtran.com

U.S. Headquarters
1 256 963-8000 voice
1 256 963-6300 fax
1 256 963-8200 fax back
international@adtran.com



I.S. EN ISO 9001
ADTRAN is a
ISO 9001 registered company.



TL 9000
ADTRAN is a
TL 9000 registered company.

Printed in the U.S.A.
I64280TRACERE1L1-8D June 2002
©2002 ADTRAN, Inc. All rights reserved.

TRACER

Wireless E1

Product Specifications

Transmitter

- **Output Power:** +20 dBm, Max
- **Frequency Band:** 2.4 to 2.4835 GHz
- **Channel Bandwidth:** 40 MHz
- **Intermediate Frequency:** 140 MHz

Receiver

- **Receive Level Threshold:** -91 dBm (10-6 BER)
- **Receive Level, Max:** -30 dBm
- **Receive Level, Nominal:** -60 dBm
- **Frequency Range:** 2.4 to 2.4835 GHz
- **Channel Bandwidth:** 40 MHz
- **Intermediate Frequency:** 70 MHz

Frequency Plan

- **A - TX 2.422 GHz RX 2.462 GHz**
- **B - TX 2.462 GHz RX 2.422 GHz**

Spread Spectrum Data Pump

- **Modulation:** QPSK
- **Spreading Method:** Direct Sequence
- **Codes:** 10
- **Code Length:** 120
- **Processing Gain:** >12 dB
- **Spreading Rate:** 12 times

Radio-Frequency Converter

- **Preselector Filter:** Cavity tuned
- **Antenna Port:** N-type, female
- **Impedance:** 50 Ω

E1 Interface

- **Capacity:** E1
- **Data Rate:** 2.048 Mbps
- **Digital Interface:** Meets G.703, G.704 & G.823
- **Line Code:** AMI, HDB3
- **Connection Option 1:** 75 Ω - BNC
- **Connection Option 2:** 120 Ω - DB-15/RJ-48
- **Alarms:** ALARM, LOS OOS, CV CRC
- **Loopbacks:** Local & remote

User Interface

- **Front Panel:** Status LEDs, configuration switches
- **Diagnostics:** E1 loopback, remote test with BERT, self-test
- **Test Points:** RSSI, system voltages, I & Q
- **Alarm Contacts:** Major, minor (normally open or closed)

Terminal Interface

- **Function:** Menu-driven user interface, monitor & control of local & remote end, password protected, event history
- **Data Rate:** 9600 Bps
- **Emulation:** VT100
- **Connection:** DB-25 (RS-232)

Baseband Processor

- **Operating Temperature:** -25° to 60° C
- **Width:** 42.4 cm, (for 19" EIA rack mounting)
- **Height:** 1U (4.4 cm)
- **Depth:** 29.2 cm
- **Humidity:** 95%, non-condensing
- **Weight:** 2.7 kg

Rack-mounted RFC

- **Operating Temperature:** -40° to 65° C
- **Width:** 42.4 cm, (for 19" EIA rack mounting)
- **Height:** 1U (4.4 cm)
- **Depth:** 29.2 cm
- **Humidity:** 95%, non-condensing
- **Weight:** 4.8 kg

Mast-mounted RFC

- **Operating Temp:** -40° to 65° C
- **Diameter:** 22.5 cm
- **Height:** 52.5 cm
- **Humidity:** 100%
- **Weight:** 8.1 kg

Power

- **Input Voltage:** 21 to 60 vDC
- **Power Consumption:** 30 watts (amperage=30 watts/voltage)
- **DC Connector:** 3 pin screw clamp
- **AC Adapter Connector:** 3 pin DIN

Ordering Information

Equipment	Part #
E1 Tracer system*	4280TRACERE1(options)
100-240 vAC Adapter**	1360DSK24VL1

Options	Appendix
---------	----------

Mast-mounted	
75 Ω BNC, preconfigured frequency plan A	L1-A
75 Ω BNC, preconfigured frequency plan B	L1-B
120 Ω DB-15/RJ-48, preconfigured frequency plan A	L3-A
120 Ω DB-15/RJ-48, preconfigured frequency plan B	L3-B
Rack-mounted	
75 Ω BNC, preconfigured frequency plan A	L2-A
75 Ω BNC, preconfigured frequency plan B	L2-B
120 Ω DB-15/RJ-48, preconfigured frequency plan A	L4-A
120 Ω DB-15/RJ-48, preconfigured frequency plan B	L4-B

* Systems are shipped with pre-configured frequency plans, but may be switched without additional equipment to accommodate either plan.

** Includes US style AC cord. Country specific power cord not included.