

M13/STS-1 MULTIPLEXER BAY

M13/STS-1 MULTIPLEXER

PRODUCT FEATURES

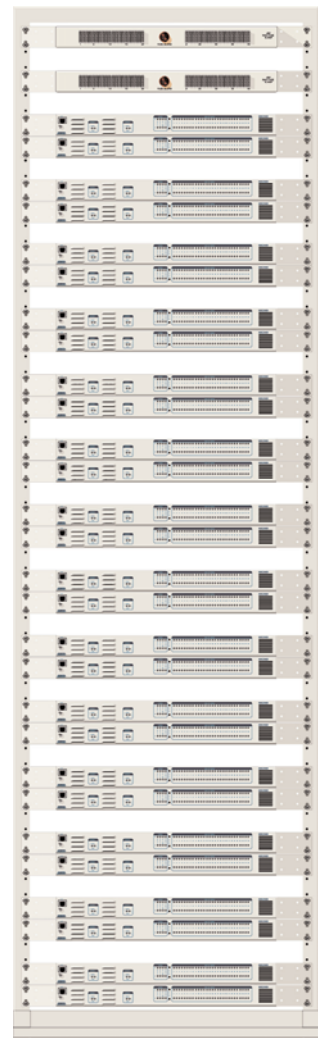
- 10, 20 and 30 shelf bays w/MGT HUBS
- Power feeds prewired from each shelf and fan to fuse panel
- Network or Unequal Flange Rack to meet Seismic zone 4 requirements
- Built-in 1:1 redundancy
- Hot-swappable controller cards
- Independent, dual-load sharing, redundant power supplies
- Embedded SNMP and Telnet management through 10BaseT Ethernet or SLIP/PPP dialup
- Capable of backhauling multiple service types (T1/E1)
- AC or DC power
- External DS3 clock option
- M13 and C-bit framing support
- Fully Network Equipment Building Standards (NEBS) compliant
- Single order code for complete system
- Custom assemblies and installation available
- Industry-leading 10-year warranty



The M13/STS-1 Multiplexer Bay performs DACS capabilities by consolidating T1 and E1 signals into a T3 circuit. This bay provides a cost-effective, versatile tool for combining independent T1s, E1s or a combination of the two over the same T3 or STS-1 circuit. The M13/STS-1 Multiplexer Bay is available in 7 foot, 9 foot and 11 foot 6-inch unequal flange or network relay rack configurations.

Each M13/STS-1 Multiplexer unit houses two hot-swappable controller cards, which provide 1:1 redundancy for the T1 and T3 signals as well as the T3 connections.

Embedded SNMP and Telnet are available through the modem port or 10BaseT Ethernet port and the unit can be configured, monitored and diagnosed with standard SNMP network management programs such as Hewlett Packard's OpenView and Cabletron's Spectrum.



CORPORATE OFFICE

ADTRAN, Inc.
901 Explorer Boulevard
P.O. Box 140000
Huntsville, AL 35814-4000

800 9ADTRAN
256 963-8000
fax: 256 963-7916
fax back: 256 963-8200
e-mail: info@adtran.com
web site: www.adtran.com

REGIONAL OFFICES

Dallas, TX
800 471-8648

Denver, CO
800 471-8651

Irvine, CA
800 788-5408

Kansas City, KS
800 471-8649

Philadelphia, PA
800 471-8656

San Antonio, TX
888 223-7671

INTERNATIONAL CONTACTS

Beijing, China
8610 8857-6415

Canada
877 923-8726

Germany
49 6007 930-203

Hong Kong
852 2824-8283

Latin America
954 474-4424

London, U.K.
44 1252 626-730

Melbourne, Australia
61 3 9658-0500

Mexico/Caribbean
256 963-8240

Zürich, Switzerland
41 1 880-2777

Product Specifications

MECHANICAL

- **Dimensions:**
7 ft., 9 ft., or 11 ft. 6 in. H X 26.4 in. W
Base measures either 12 in. or 15 in. D
- **Weight:** 234 lbs. - 316 lbs., dependent upon configuration
- **Mounting:** 23-inch rackmount

INTERFACES

Network Interfaces

- 28 DSX-1s per unit
- Between 280 and 1176 DS3/STS-1s per bay
- **Line Length:** short (< 50 feet) and long (> 50 feet)
- **Framing Format:** M13 and C-bit parity
- **Line rate (per shelf):** 44.736 Mbps
- **Line Interface:** dual 75-ohm BNC coax female connectors

DSX-1 Interfaces:

- **Line Length:** 0-655 feet
- **Line rate:** 1.544 Mbps
- **Line code:** AML or B8ZS
- **Line interface(s):** two 64-pin Amphenol connectors

ELECTRICAL

- AC version: 120 VAC, 30 W (per shelf)
- DC version: -48 VDC, 30 W (per shelf)

REGULATORY STANDARDS

- NEBS Level 3
- UL and CUL
- Industry Canada CS03
- FCC Part 15, Class A, Part 68

MANAGEMENT

- SNMP
- Telnet
- Compatible with standard interfaces such as HP OpenView and Cabletron Spectrum

ENVIRONMENTAL

- **Operating:** -40°C to +70°C
- **Storage:** -40°C to +85°C
- **Relative Humidity:** Up to 95 percent, noncondensing

Ordering Information

EQUIPMENT

PART

28 shelf bay.....	4150MX28L28N012
40 shelf bay.....	4150MX28L40N012
10 shelf bay w/E-Net Hub	4150MX28L10N012
20 shelf bay w/E-Net Hub	4150MX28L20N012
30 shelf bay w/E-Net Hub	4150MX28L30N012

Specifications subject to change without notice.



I.S. EN ISO 9001

ADTRAN is an ISO 9001
registered company.



Printed in the U.S.A. on recycled paper.
64150MX28LXN012-8B February 2002
©2002 ADTRAN, Inc. All rights reserved.